

Runva

WINCH INDUSTRIES 1989

***Extreme Performance
Recovery Winches***



MANUFACTURING
PREMIUM QUALITY
WINCHES FOR **30 YEARS**



**INDUSTRY LEADING
WARRANTY**
WITHOUT ALL THE HIDDEN FINE PRINT

**BIGGEST
SELECTION**
RECREATIONAL AND INDUSTRIAL

**RUNVA DEDICATED
MANUFACTURING PLANT**
NOT REBRANDED WINCHES LIKE MANY OTHERS

ATV
SERIES

ATV
SERIES



3.5P SUPER DELUXE

SPECIFICATIONS

Rated Line Pull 3,500lb (1,588kg) | **Motor** Permanent Magnet (12V) 2.4kW/3.2HP (also available in 24V)
Gear Ratio 170:1 (full steel gearing) | **Clutch** Runva patented cam clutch
Cable Type Synthetic Rope 5mm x 15m (Also available with Steel Cable)
Mounting Bolt Pattern 124mm x 76mm | **Overall Dimensions** 335mm x 116mm x 112mm
Winch Body Colour Red | **Warranty** 5 year electrical and limited lifetime mechanical*

INCLUDED WITH THE WINCH

Complete Winch with Synthetic Rope/Aircraft Grade Steel Cable, 250A Solenoid, 2.3M Rocker Switch ATV Handle Mounting Pack, 2.3M Handheld Remote, "Y" Connector, Aluminium Hawse Fairlead/Stainless Steel Roller Fairlead, 1/4" Hook and 2T 1/2" Shackle, Mounting Plate, 2.3M 200A Power Cables x 2 Sets, 2T Snatch Block, 2T 1" 2M Tow Strap, Cable Stop Protector



4.5X

SPECIFICATIONS

Rated Line Pull 4,500lb (2,041kg) | **Motor** Permanent Magnet (12V) 2.4kW/3.2HP (also available in 24V)
Gear Ratio 172:1 (full steel gearing) | **Clutch** Sliding ring gear | **Cable Type** Synthetic Rope 6mm x 15.3m
(Also available with Steel Cable) | **Mounting Bolt Pattern** 129mm x 96mm
Overall Dimensions 378mm x 126mm x 165mm | **Winch Body Colour** Black
Warranty 5 year electrical and limited lifetime mechanical*

INCLUDED WITH THE WINCH

Complete Winch with Synthetic Rope/Aircraft Grade Steel Cable, 250A Solenoid, 2.3M Rocker Switch ATV Handle Mounting Pack, 2.3M Handheld Remote, "Y" Connector, Aluminium Hawse Fairlead/Stainless Steel Roller Fairlead, 1/4" Hook and 2T 1/2" Shackle, Mounting Plate, 2.3M 200A Power Cables x 2 Sets, 2T Snatch Block, 2T 1" 2M Tow Strap, 2" Square Hitch Connector Plate

ATV SERIES

COMPACT SERIES



EWT4500

SPECIFICATIONS

Rated Line Pull 4,500lb (2,041kg) | **Motor** Permanent Magnet (12V) 2.5kW/3.4HP (also available in 24V)
Gear Ratio 166:1 (full steel gearing) | **Clutch** Runva patented cam clutch
Cable Type Synthetic Rope 6mm x 14.5m (Also available with Steel Cable)
Mounting Bolt Pattern 168mm x 76.2mm | **Overall Dimensions** 412mm x 115mm x 123mm
Winch Body Colour Black | **Warranty** 5 year electrical and limited lifetime mechanical*

INCLUDED WITH THE WINCH

Complete Winch with Synthetic Rope/Aircraft Grade Steel Cable, 250A Solenoid, 2.3M Rocker Switch
 ATV Handle Mounting Pack, 2.3M Handheld Remote, "Y" Connector, Aluminium Hawse Fairlead/Stainless
 Steel Roller Fairlead, 1/4" Hook and 2T 1/2" Shackle, Mounting Plate, 2.3M 200A Power Cables x 2 Sets,
 2T Snatch Block, 2T 1" 2M Tow Strap, Cable Stop Protector



9.5XS

SPECIFICATIONS

Rated Line Pull 9,500lb (4,309kg) | **Motor** Series Wound (12V) 4.6kW/6.1HP (Also available in 24V)
Gear Ratio 230:1 (full steel gearing) | **Clutch** Sliding Ring Gear | **Cable Type** Synthetic Rope 10mm x 15m
 (Also available with Steel Cable) | **Mounting Bolt Pattern** 151mm x 114.3mm
Overall Dimensions 437mm x 160mm x 217mm (gearbox can be rotated to reduce overall height)
Winch Body Colour Red | **Warranty** 5 year electrical and lifetime mechanical*

INCLUDED WITH THE WINCH

Winch fitted with Synthetic Rope/Aircraft Grade Steel Cable, Heavy Duty Waterproof Solenoid fitted
 inside control box module (600A), Control module fitting bracket + tie bar mounting bracket kit,
 Heavy duty 1.8M length battery leads, Heavy Duty 60cm length power leads from Solenoid to Winch Motor,
 3.7M Handheld Remote, Wireless Remote - latest IP67 model, Aluminum Hawse Fairlead/Stainless Steel
 Roller Fairlead (supplied with Steel Cable option), Power isolator switch with bracket and power lead,
 Safety Hook, Mounting bolts, Hand saver strap.

COMPACT SERIES

4X4 ELECTRIC SERIES

**FULL xIP67 INGRESS
PROTECTION**



11XS

SPECIFICATIONS

Rated Line Pull 11,000lb (4,990kg) | **Motor** Series Wound (12V) 5.0kW/6.7HP (also available in 24V)
Gear Ratio 228:1 (full steel gearing) | **Clutch** Stainless Steel rotary clutch. (optional extra air clutch available)
Cable Type Synthetic Rope 10mm x 15m (Also available with Steel Cable)
Mounting Bolt Pattern 152mm x 114.3mm | **Overall Dimensions** 471mm x 160mm x 200mm
 (gearbox can be rotated to reduce overall height) | **Winch Body Colour** Black
Warranty 5 year electrical and limited lifetime mechanical*

INCLUDED WITH THE WINCH

Winch fitted with Synthetic Rope/Aircraft Grade Steel Cable, Heavy Duty Waterproof Solenoid fitted inside control box module (600A) Control module fitting bracket + tie bar mounting bracket kit, Heavy duty 1.8m length battery leads, Heavy Duty 60cm length power leads from Solenoid to Winch Motor, Premium heavy duty 3.7m Handheld Remote, Wireless Remote - latest IP67 model, Aluminum Hawse Fairlead/Stainless Steel Roller Fairlead (supplied with Steel Cable option), Power isolator switch with bracket and power lead, Recovery hook, Mounting bolts, Hand saver strap.



EWX9500

SPECIFICATIONS

Rated Line Pull 9,500lb (4,309kg) | **Motor** Series Wound (12V) 4.6kW/6.1HP (also available in 24V)
Gear Ratio 230:1 (full steel gearing) | **Clutch** Sliding ring gear | **Cable Type** Synthetic Rope 10mm x 26.5m
Mounting Bolt Pattern 254mm x 114.3mm | **Overall Dimensions** 540mm x 160mm x 217mm. (gearbox can be rotated to reduce overall height) | **Winch Body Colour** Grey
Warranty 5 year electrical and limited lifetime mechanical*

INCLUDED WITH THE WINCH

Winch fitted with Synthetic Rope, Heavy Duty Waterproof Solenoid fitted inside control box module (600A), Control module fitting bracket, Heavy duty 1.8M length battery leads, Heavy Duty 60cm length power leads from Solenoid to Winch Motor 3.7M Handheld Remote, Wireless Remote - latest IP67 model, Aluminum Hawse Fairlead, Power isolator switch with bracket and power lead, Safety Hook, Mounting bolts, Hand saver strap

4X4 ELECTRIC SERIES

4X4 ELECTRIC SERIES

FULL IP67 INGRESS PROTECTION



AIR CLUTCH AVAILABLE

FAST LINE SPEED

EWB9500-Q PREMIUM

SPECIFICATIONS

Rated Line Pull 9,500lb (4,309kg) | **Motor** Series Wound (12V) 5.4kW/7.2HP (also available in 24V)
Gear Ratio 108:1 (full steel gearing) | **Clutch** Stainless Steel rotary clutch. (optional extra air clutch available)
Cable Type Synthetic Rope 10mm x 26.5m (Also available with Steel Cable)
Mounting Bolt Pattern 254mm x 114.3mm
Overall Dimensions 612mm x 160mm x 200mm. (gearbox can be rotated to reduce overall height)
Gross Weight | **Net Weight** | **Winch Body Colour** Black
Warranty 5 year electrical and limited lifetime mechanical*

INCLUDED WITH THE WINCH

Winch fitted with Synthetic Rope/Aircraft Grade Steel Cable, Heavy Duty Waterproof Solenoid fitted inside control box module (600A), Control module fitting bracket, Heavy duty 1.8M length battery leads, Heavy Duty 60cm length power leads from Solenoid to Winch Motor, 3.7M Handheld Remote, Wireless Remote - latest IP67 model, Aluminum Hawse Fairlead/Stainless Steel Roller Fairlead (supplied with Steel Cable option), Power isolator switch with bracket and power lead, Large red recovery hook, Mounting bolts, Hand saver strap, Bonus Runva merchandise



11XP

SPECIFICATIONS

Rated Line Pull 11,000lb (4,990kg) | **Motor** Series Wound (12V) 4.9kW/6.5HP (also available in 24V)
Gear Ratio 230:1 (full steel gearing) | **Clutch** Sliding ring gear | **Cable Type** Synthetic Rope 10mm x 26.5m (Also available with Steel Cable) | **Mounting Bolt Pattern** 254mm x 114.3mm
Overall Dimensions 540mm x 160mm x 217mm (gearbox can be rotated to reduce overall height)
Winch Body Colour Red or Black | **Warranty** 5 year electrical and limited lifetime mechanical*

INCLUDED WITH THE WINCH

Winch fitted with Synthetic Rope/Aircraft Grade Steel Cable, Heavy Duty Waterproof Solenoid fitted inside control box module (600A), Control module fitting bracket, Heavy duty 1.8M length battery leads, Heavy Duty 60cm length power leads from Solenoid to Winch Motor, 3.7M Handheld Remote, Wireless Remote - latest IP67 model, Aluminum Hawse Fairlead/Stainless Steel Roller Fairlead (supplied with Steel Cable option), Power isolator switch with bracket and power lead, Safety Hook, Mounting bolts, Hand saver strap, Winch Cover

4X4 ELECTRIC SERIES

4X4 ELECTRIC SERIES

FULL IP67 INGRESS PROTECTION



AIR CLUTCH AVAILABLE

11XP PREMIUM

SPECIFICATIONS

Rated Line Pull 11,000lb (4,990kg) | **Motor** Series Wound (12V) 5.0kW/6.5HP (also available in 24V)
Gear Ratio 228:1 (full steel gearing) | **Clutch** Stainless Steel rotary clutch. (optional extra air clutch available)
Cable Type Synthetic Rope 10mm x 26.5m (Also available with Steel Cable)
Mounting Bolt Pattern 254mm x 114.3mm
Overall Dimensions 574mm x 160mm x 200mm. (gearbox can be rotated to reduce overall height)
Gross Weight | **Net Weight** | **Winch Body Colour** Black
Warranty 5 year electrical and limited lifetime mechanical**

INCLUDED WITH THE WINCH

Winch fitted with Synthetic Rope/Aircraft Grade Steel Cable, Heavy Duty Waterproof Solenoid fitted inside control box module (600A), Control module fitting bracket, Heavy duty 1.8M length battery leads, Heavy Duty 60cm length power leads from Solenoid to Winch Motor, 3.7M Handheld Remote, Wireless Remote - latest IP67 model, Aluminum Hawse Fairlead/Stainless Steel Roller Fairlead (supplied with Steel Cable option), Power isolator switch with bracket and power lead, Shackle Thimble with D-shackle, Mounting bolts, Hand saver strap, Winch Cover, Snatch Block, Bonus Runva merchandise

FULL IP67 INGRESS PROTECTION



NEW MODEL

EWW12000 ULTIMATE

SPECIFICATIONS

Rated Line Pull 12,000lb (5,443kg) | **Motor** Series Wound (12V) 4.0kW/5.4HP (also available in 24V)
Gear Ratio 253:1 (full steel gearing through a very efficient gearbox) | **Clutch** Rotary clutch (optional extra air clutch available) | **Cable Type** Synthetic Rope 11mm x 26.5m (Also available with Steel Cable)
Mounting Bolt Pattern 254mm x 114.3mm | **Overall Dimensions** 553.5mm x 160mm x 200mm. (gearbox can be rotated to reduce overall height) | **Winch Body Colour** Black
Warranty 5 year electrical and limited lifetime mechanical*

INCLUDED WITH THE WINCH

Winch fitted with Synthetic Rope/Aircraft Grade Steel Cable, Heavy Duty Waterproof Solenoid fitted inside control box module (600A), Control module fitting bracket, Heavy duty 1.8M length battery leads, Heavy Duty 60cm length power leads from Solenoid to Winch Motor, 3.7M Handheld Remote, Wireless Remote - latest IP67 model, Aluminum Hawse Fairlead/Stainless Steel Roller Fairlead (supplied with Steel Cable option), Power isolator switch with bracket and power lead, Large red recovery hook, Mounting bolts, Hand saver strap, Bonus Runva merchandise

4X4 ELECTRIC SERIES

FULL IP67 INGRESS
PROTECTION



AIR CLUTCH
AVAILABLE

13XP PREMIUM

SPECIFICATIONS

Rated Line Pull 13,000lb (5,897kg) | **Motor** Series Wound (12V) 5.6kW/7.6HP (also available in 24V)
Gear Ratio 228:1 (full steel gearing through a very efficient gearbox) | **Clutch** Stainless Steel rotary clutch.
(optional extra air clutch available) | **Cable Type** Synthetic Rope 11mm x 26.5m (Also available with Steel Cable)
Mounting Bolt Pattern 254mm x 114.3mm | **Overall Dimensions** 602mm x 160mm x 200mm
(gearbox can be rotated to reduce overall height) | **Winch Body Colour** Black
Warranty 5 year electrical and limited lifetime mechanical*

INCLUDED WITH THE WINCH

Winch fitted with Synthetic Rope/Aircraft Grade Steel Cable, Heavy Duty Waterproof Solenoid fitted inside control box module (600A), Control module fitting bracket, Heavy duty 1.8M length battery leads, Heavy Duty 60cm length power leads from Solenoid to Winch Motor, 3.7M Handheld Remote, Wireless Remote - latest IP67 model, Aluminum Hawse Fairlead/Stainless Steel Roller Fairlead (supplied with Steel Cable option), Power isolator switch with bracket and power lead, Large red recovery hook, Mounting bolts, Hand saver strap, Winch Cover, Snatch Block, Bonus Runva merchandise

NEW IN OUR CONTROL BOXES

NEW IP67 RATED WIRELESS RECEIVER MATCHED WITH
AN IP67 RATED WIRELESS REMOTE.
NOW STANDARD ACROSS OUR ENTIRE RANGE*



4X4 ELECTRIC SERIES

4X4 ELECTRIC SERIES



EWN17500

SPECIFICATIONS

Rated Line Pull 17,500lb (7,938kg) | **Motor** Series Wound (12V) 5.4kW/7.1HP (also available in 24V)
Gear Ratio 430:1 (full steel gearing) | **Clutch** Sliding ring gear | **Cable Type** Synthetic Rope 11mm x 26.5m
 (Also available with Steel Cable) | **Mounting Bolt Pattern** 254mm x 114.3mm, 254mm x 165.1mm
Overall Dimensions 620mm x 214mm x 250mm (gearbox can be rotated to reduce overall height)
Winch Body Colour Grey | **Warranty** 5 year electrical and limited lifetime mechanical*

INCLUDED WITH THE WINCH

Winch fitted with Synthetic Rope/Aircraft Grade Steel Cable, Heavy Duty Waterproof Solenoid fitted inside control box module (600A), Control module fitting bracket, Heavy duty 1.8M length battery leads, Heavy Duty 60cm length power leads from Solenoid to Winch Motor, 3.7M Handheld Remote, Wireless Remote - latest IP67 model, Aluminum Hawse Fairlead/Stainless Steel Roller Fairlead (supplied with Steel Cable option), Power isolator switch with bracket and power lead, Safety Hook, Mounting bolts, Hand saver strap.

FULL IP67 INGRESS PROTECTION

EXTRA HEAVY DUTY



AIR CLUTCH AVAILABLE

EWB20000 PREMIUM

SPECIFICATIONS

Rated Line Pull 20,000lb (9,072kg) | **Motor** Series Wound (12V) 5.5kW/7.4HP (also available in 24V)
Gear Ratio 370:1 (full steel gearing through a very efficient gearbox) | **Clutch** Stainless Steel rotary clutch.
 (optional extra air clutch available) | **Cable Type** Synthetic Rope 12mm x 26.5mm (Also available with Steel Cable)
Mounting Bolt Pattern 254mm x 114.3mm, 254mm x 165.1mm
Overall Dimensions 626.5mm x 214mm x 252mm (gearbox can be rotated to reduce overall height)
Winch Body Colour Grey | **Warranty** 5 year electrical and limited lifetime mechanical*

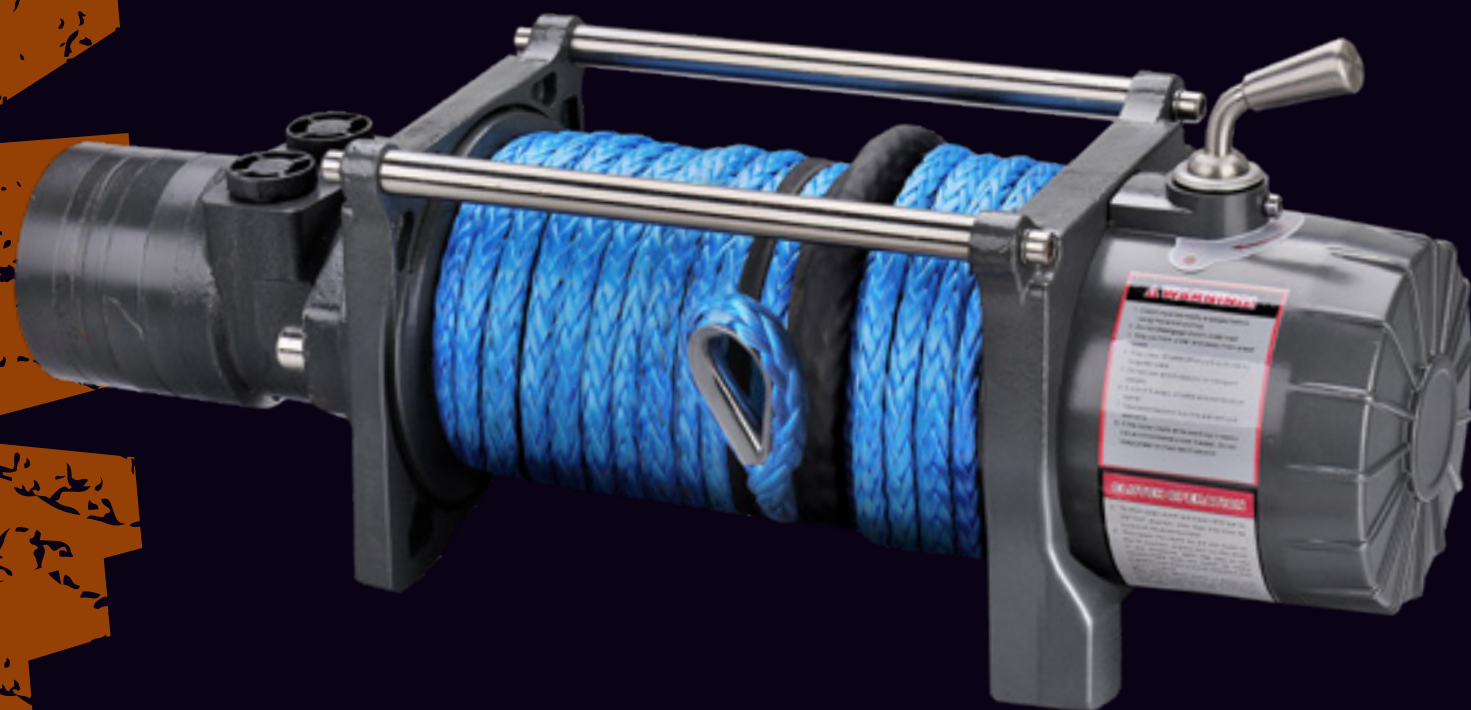
INCLUDED WITH THE WINCH

Winch fitted with Synthetic Rope/Aircraft Grade Steel Cable, Heavy Duty Waterproof Solenoid fitted inside control box module (600A), Control module fitting bracket, Heavy duty 1.8M length battery leads, Heavy Duty 60cm length power leads from Solenoid to Winch Motor, 3.7M Handheld Remote, Wireless Remote - latest IP67 model, Aluminum Hawse Fairlead/Stainless Steel Roller Fairlead (supplied with Steel Cable option), Power isolator switch with bracket and power lead, Large recovery hook, Mounting bolts, Hand saver strap, Bonus Runva merchandise



**WINCH SOLUTIONS
THAT WORK**

HYDRAULIC SERIES



HWX12000

SPECIFICATIONS

Rated Line Pull 12,000lb (5,443kg) | **Motor Displacement** 65ml/r | **Oil Flow** 35-45L/min | **Pressure** 11MPa
Gear Ratio 28:1 (full steel gearing) | **Clutch** Sliding ring gear | **Cable Type** Synthetic Rope 11mm x 26.5m
 (Also available with Steel Cable) | **Mounting Bolt Pattern** 254mm x 114.3mm
Overall Dimensions 550mm x 174mm x 217mm. (gearbox can be rotated to reduce overall height)
Winch Body Colour Grey | **Warranty** 5 year electrical and limited lifetime mechanical*

INCLUDED WITH THE WINCH

Winch fitted with Synthetic Rope/Aircraft Grade Steel Cable, 3.7M Handheld Remote, Valve Block, Directional control valve (available in both 12V and 24V), 4x Hoses, 6x Hydraulic fittings, Aluminum Hawse Fairlead/Stainless Steel Roller Fairlead (supplied with Steel Cable option), Safety Hook, Mounting bolts, Hand saver strap

COMPETITION SERIES



FAST
LINE SPEED

FULL IP67 INGRESS
PROTECTION

AIR CLUTCH
AVAILABLE

EWS10000 PREMIUM

SPECIFICATIONS

Rated Line Pull 10,000lb (4,536kg) | **Motor** Series Wound (12V) 2X 5.4kW/7.2HP (also available in 24V)
Gear Ratio 108:1 (full steel gearing) | **Clutch** Stainless Steel rotary clutch. (optional extra air clutch available)
Cable Type Synthetic Rope 10mm x 30m | **Mounting Bolt Pattern** 254mm x 114.3mm
Overall Dimensions 479mm x 262mm x 355mm | **Winch Body Colour** Black
Warranty See warranty document regarding competition usage

INCLUDED WITH THE WINCH

Winch fitted with Synthetic Rope, 2x Heavy Duty Waterproof Solenoids (600A), Remote extension plug with bracket kit, 3.7M Handheld Remote, Wireless Remote - latest IP67 model, Aluminum Hawse Fairlead, Large red recovery hook, Mounting bolts, Hand saver strap

We recommend the use of 70mm² to 90mm² diameter power leads with a minimum 1000CCA+ battery dedicated to powering the winch.

LIFTING SERIES



FULL IP67 INGRESS
PROTECTION

EH2000

SPECIFICATIONS

Rated Lift 2,000lb (907kg) | **Motor** Series Wound (12V) 4.6kW/6.1HP (also available in 24V)
Gear Ratio 228:1 (full steel gearing) | **Clutch** N/A | **Cable Type** Steel Cable 6mm x 14.5m
Mounting Bolt Pattern 151mm x 114.3mm | **Overall Dimensions** 467mm x 160mm x 167mm
Gross Weight | **Net Weight** | **Winch Body Colour** Black
Warranty 5 year electrical and limited lifetime mechanical*

INCLUDED WITH THE WINCH

Winch fitted Aircraft Grade Steel Cable, Heavy Duty Waterproof Solenoid fitted inside control box module (600A), Heavy duty 1.8M length battery leads, Heavy Duty 60cm length power leads from Solenoid to Winch Motor, 3.7M Handheld Remote, Wireless Remote - latest IP67 model, Power isolator switch with bracket and power lead, Safety Hook, Mounting bolts



@RUNVAWINCHES
TAG US IN YOUR ADVENTURES

Runva

WINCH INDUSTRIES 1989

RUNVAWINCH.COM.AU
1800 451 178

*See full Runva Warranty Policy on runvawinch.com.au